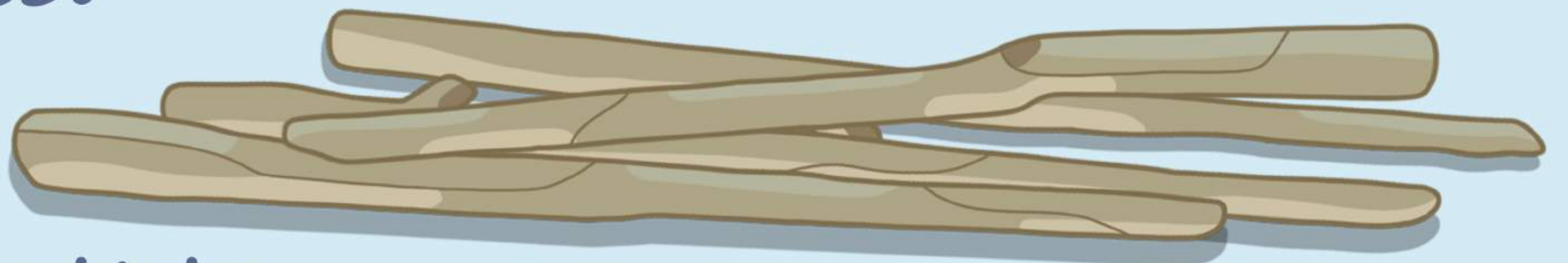




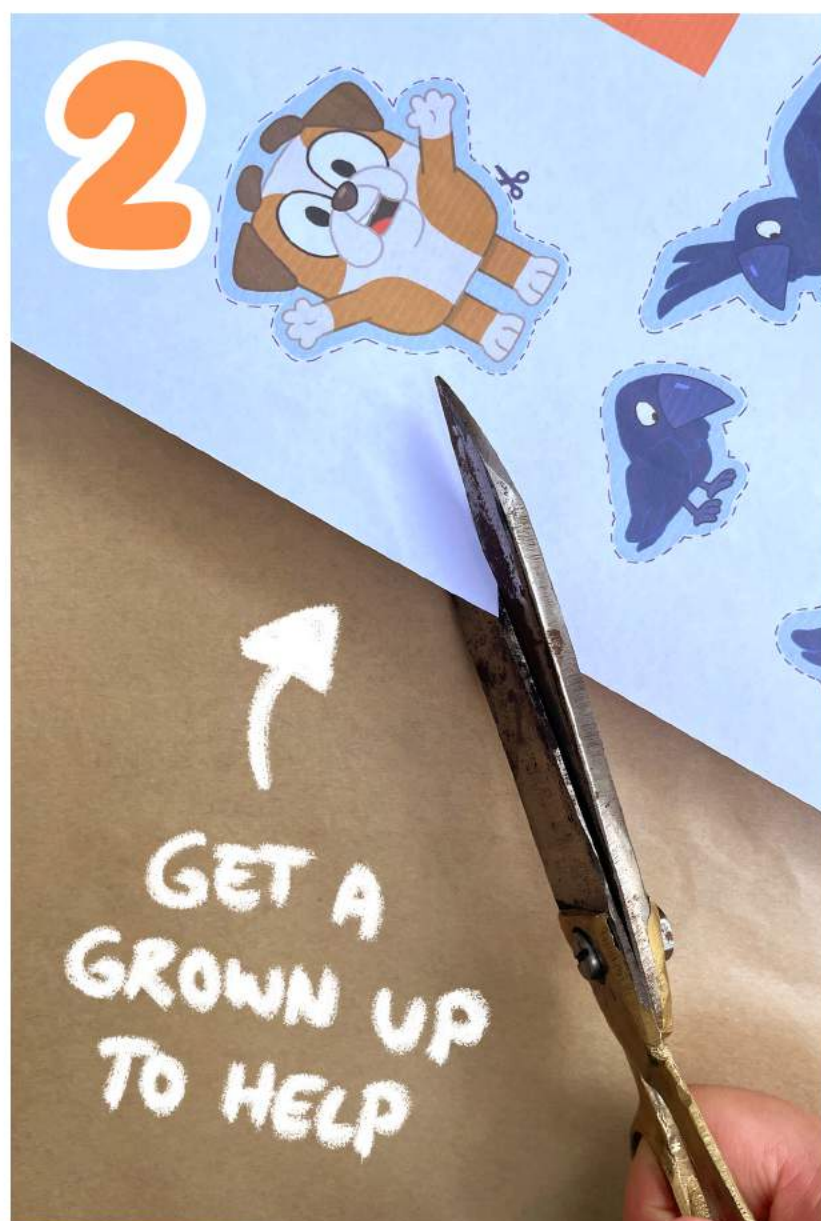
WHAT YOU'LL need:

- Scissors
- Masking tape
- Pen or pencil
- Toilet roll cardboard tube
- Winton scarecrow print-out
- 6x twigs about the size of a pencil
- Handful of dried grass
- Pot plant



METHOD

1. Gather materials including sticks and dried grass.
2. Print and cut out the Winton scarecrow template.



MAKE WINTON'S HAT

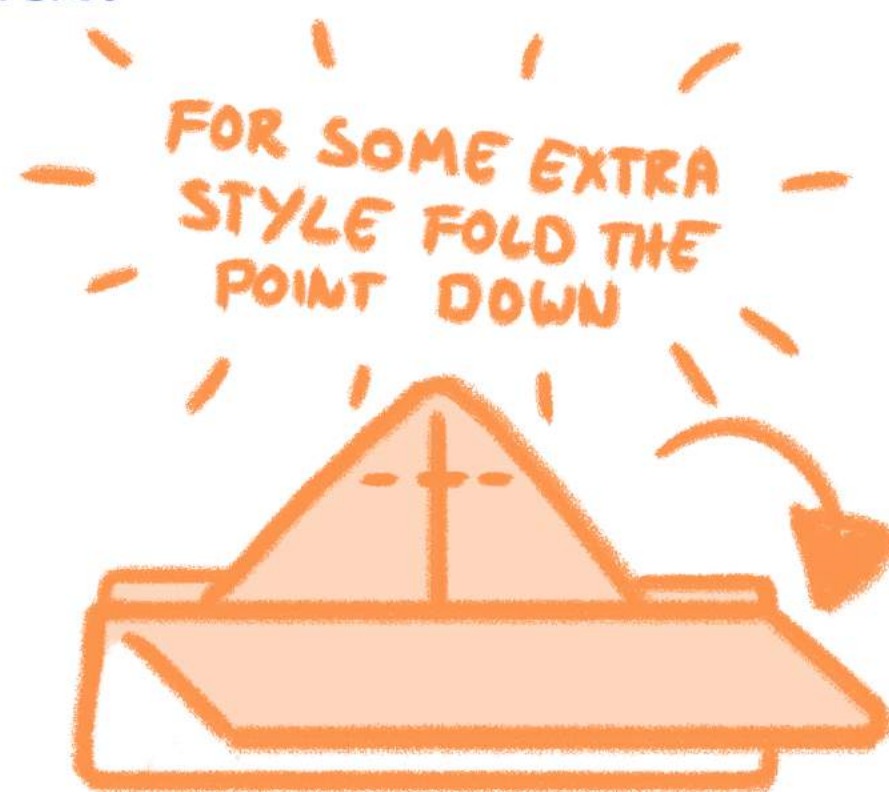
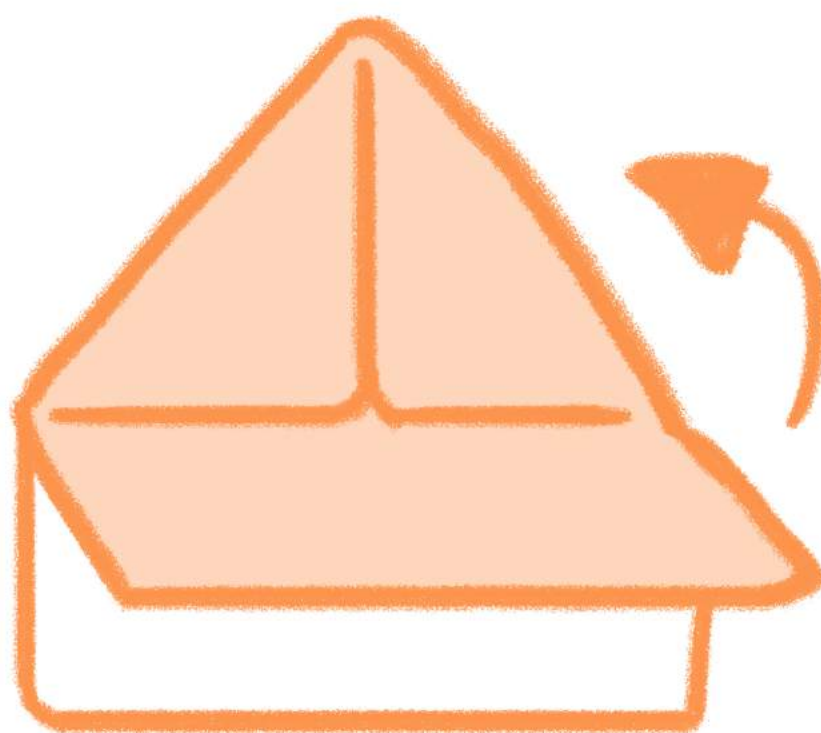
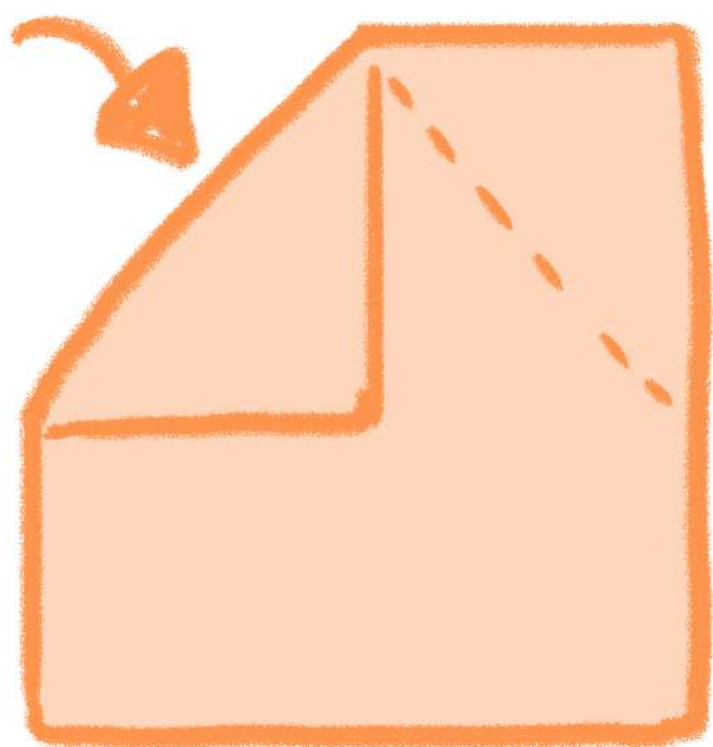
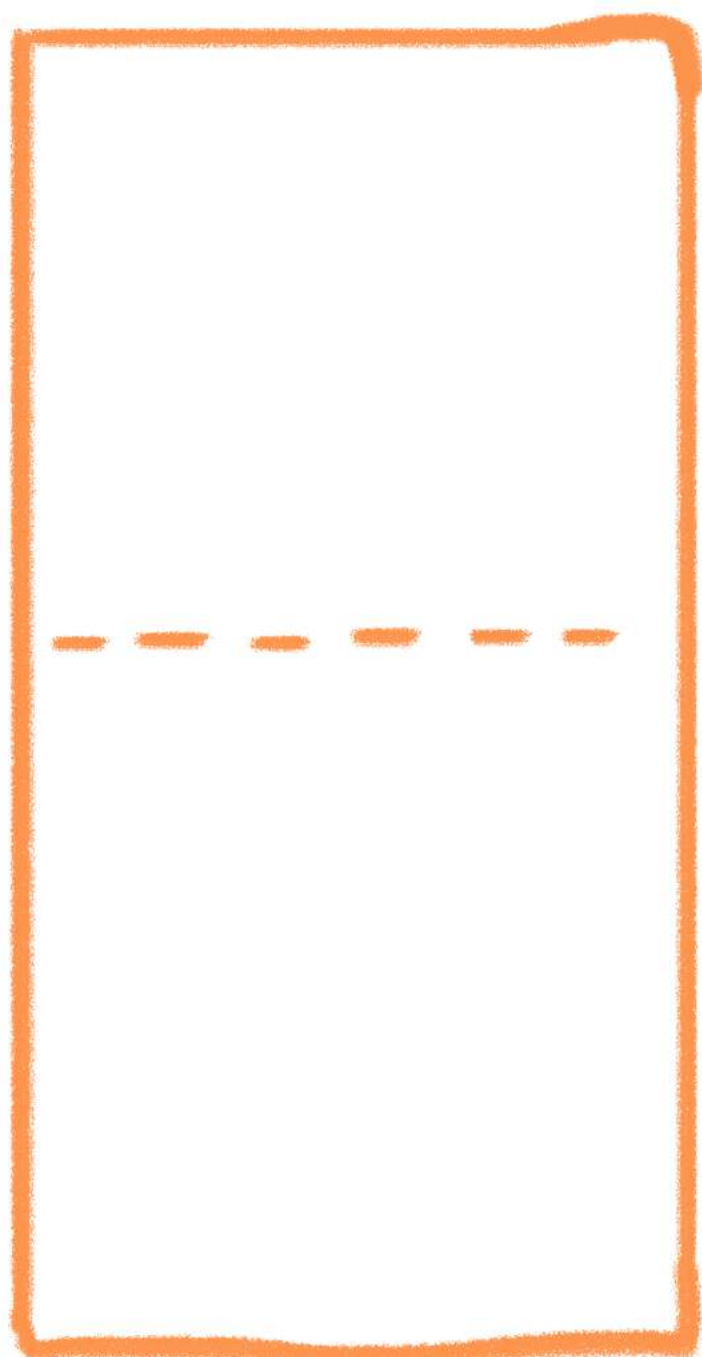
3. To make Winton's scarecrow hat, you might need a grown ups help.

Cut out the orange rectangle from the printout page.

With the white side up, fold the rectangle in half and then fold both of the top corners into the middle.

Fold the bottom of the top layer up to the the triangles and back down in half - like you do when folding the wings of a paper aeroplane.

Now do the same thing to the other side so that it looks like a hat!

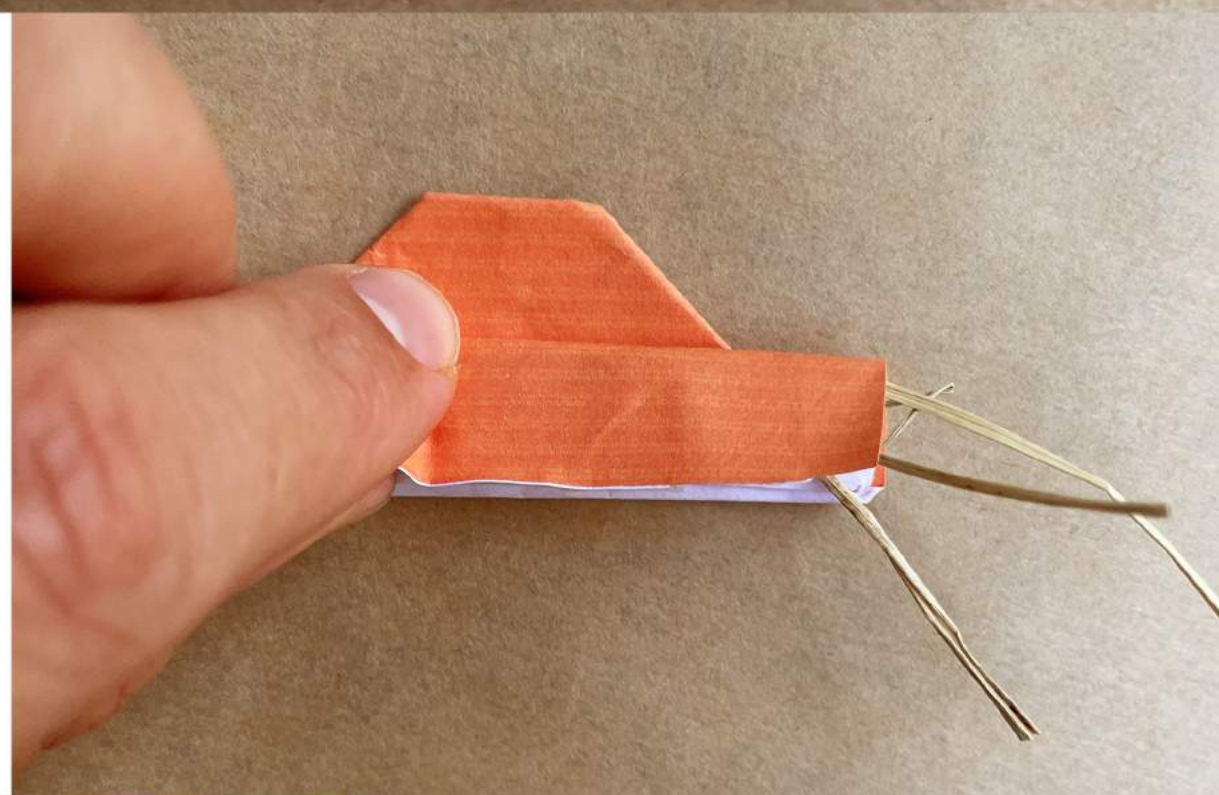


SHOULD
LOOK
SOMETHING
LIKE THIS

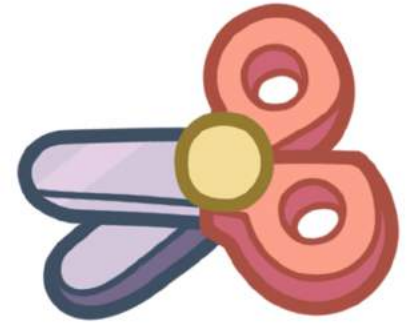


MAKE IT FANCY!

4. Stick the dried grass inside Winton's hat with some tape to make it look like a real life straw hat



SET UP YOUR WINTON



5. Draw and cut out the toilet paper roll so that it looks like pictures 5 and 6.

6. Fold the tall strip into an 'L' shape like in picture 7 to make a tree stump for Winton to stand on.



7. Make the tree stump sturdy by cutting slits into the bottom of the toilet paper roll and folding the flaps outward.

8. Create a loop with sticky tape and stick Winton to the "L" shaped cardboard.





SHOO!

9. Use tape to attach crows to the twigs.
10. Find a pot plant that needs protecting and push the crows into the dirt of the pot plant.
11. Place Winton onto the soil.



NOW YOU CAN RELAX KNOWING WINTON IS PROTECTING YOUR PLANTS

PRINTOUT



With a grown ups help, print and cut out Winton, the crows and the orange rectangle.

Then follow the intructions to make your own Winton scarecrow!

