

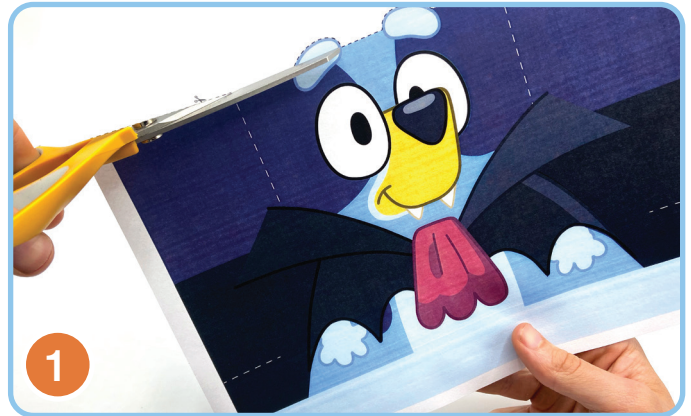
Bluey

QUICK + EASY

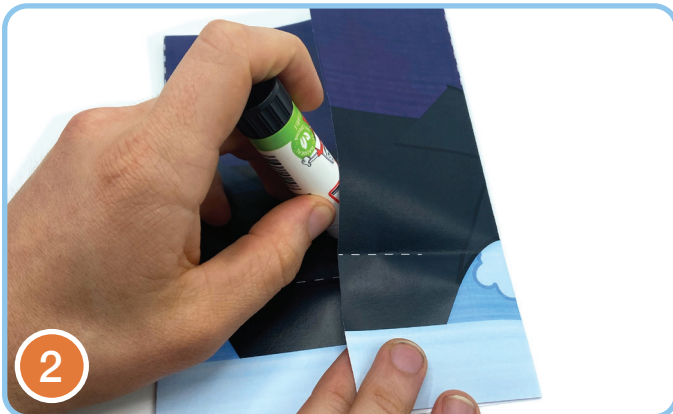
BLUEY AND BINGO PARTY TREAT BAGS

You will need:

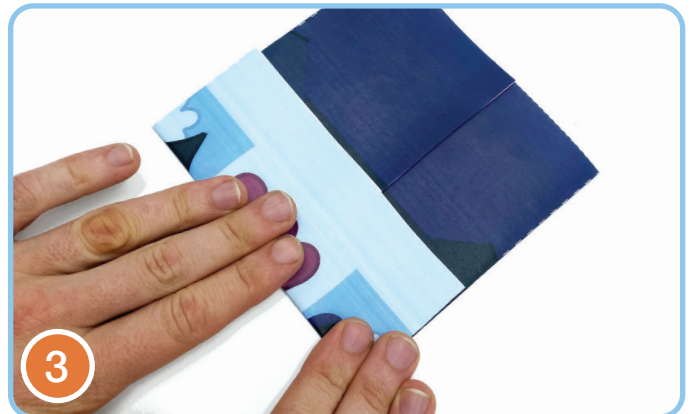
- Heavy card for handles
- Scissors
- Transparent sticky tape
- Quick drying glue



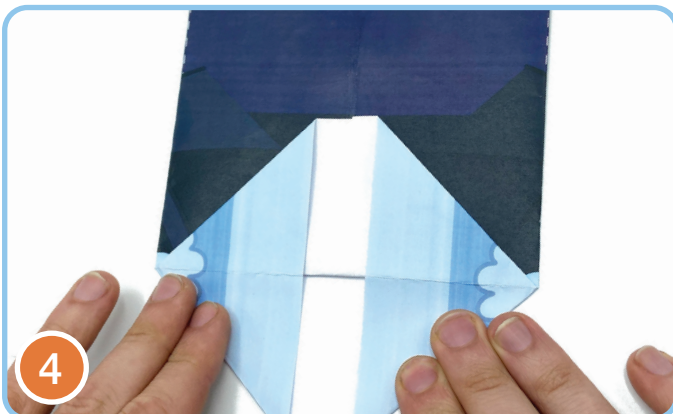
1. Download, print and cut out the template provided.



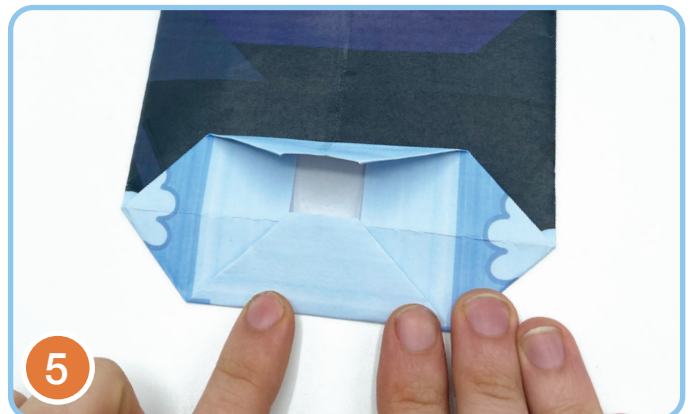
2. Lay the page printed side down and fold in the sides, following the dotted line. Glue the two edges together, as shown.



3. Next, fold up the base of the sheet, using the dotted line as a guide.



4. Open out the base and fold in the two sides.



5. Fold down the top and lower edges of the base as shown in the picture.

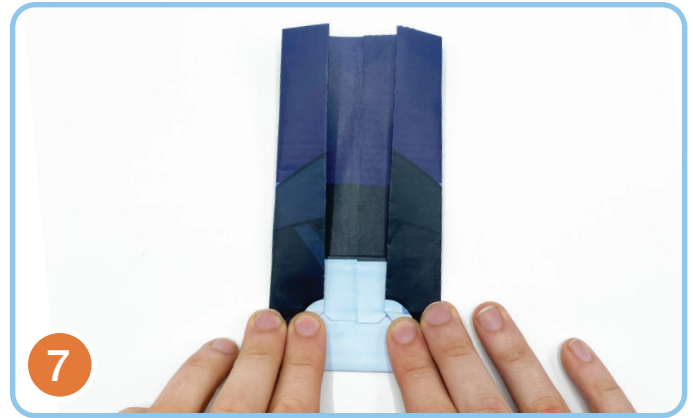
Bluey

QUICK + EASY

BLUEY AND BINGO PARTY TREAT BAGS



6. Glue the flaps down to close the base of the gift bag.



7. Next, fold in the sides of the bag.



8. Flip the bag around and repeat, folding in the sides of the bag.



9. Gently open the gift bag.



And finally.....

10. Cut a long strip of card for the handle and attach to the bag using transparent tape.

Let's party!

Use the same technique to create Bingo Gift Bags!



